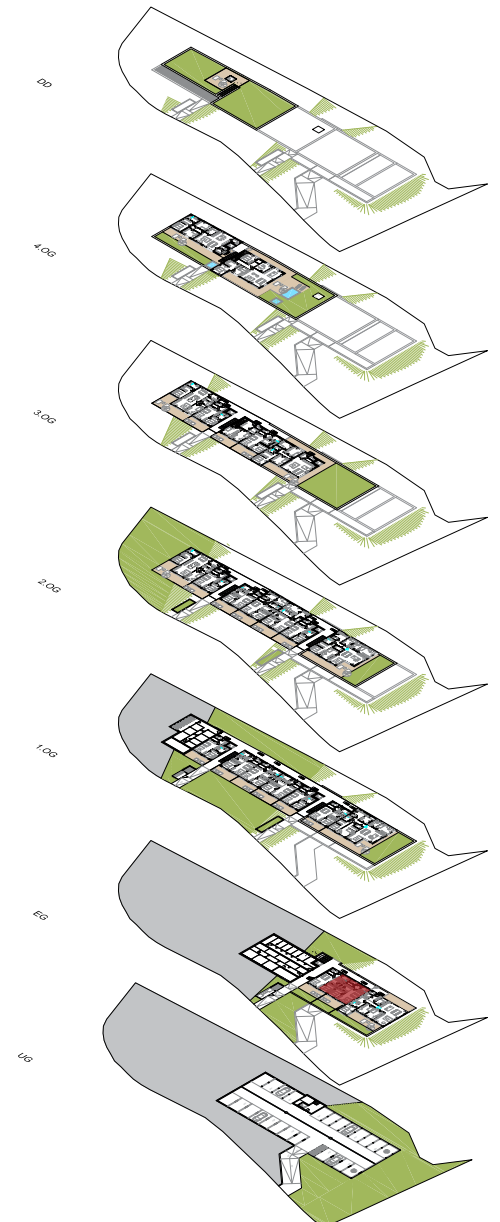




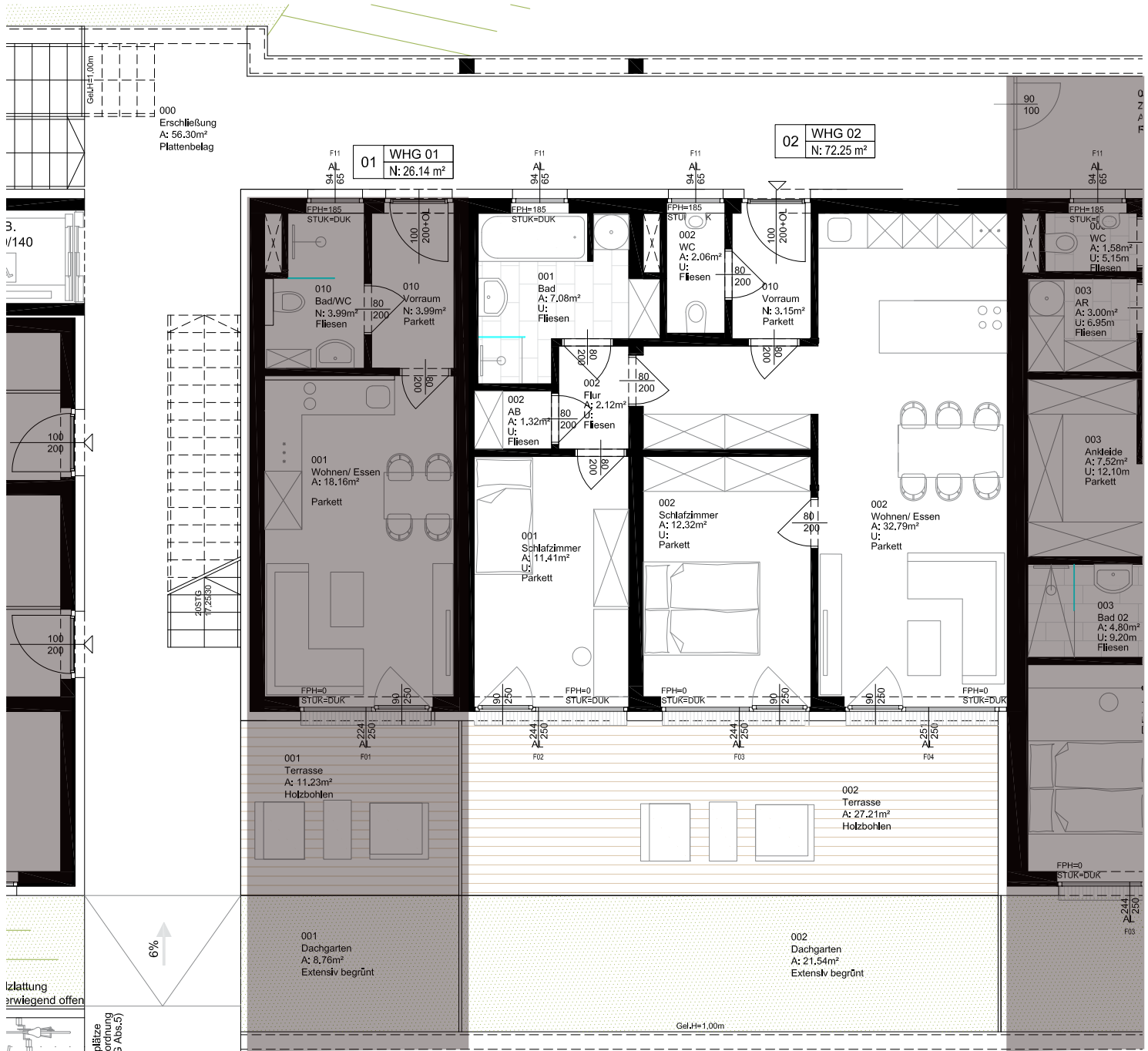
SCHÖNBRUNNGASSE 16-20

8043 GRAZ - Rosenberg

wohnung 02



wohnraumwerk
Bauträger & Projektentwicklungs GmbH
Marschallgasse 17, 8020 Graz
www.wohnraumwerk.at



000 Erschließung
A: 56.30m²
Plattenbelag

01 WHG 01
N: 26.14 m²

02 WHG 02
N: 72.25 m²

010 Bad/WC
N: 3.99m²
Fliesen

010 Vorraum
N: 3.99m²
Parkett

001 Wohnen/ Essen
A: 18.16m²
Parkett

001 Schlafzimmer
A: 11.41m²
Parkett

002 AB
A: 1.32m²
U: Fliesen

002 Flur
A: 2.12m²
U: Fliesen

001 Bad
A: 7.08m²
U: Fliesen

002 WC
A: 2.06m²
U: Fliesen

010 Vorraum
N: 3.15m²
Parkett

002 Schlafzimmer
A: 12.32m²
U: Parkett

002 Wohnen/ Essen
A: 32.79m²
U: Parkett

003 AR
A: 3.00m²
U: 6.95m Fliesen

003 Ankleide
A: 7.52m²
U: 12.10m Parkett

003 Bad 02
A: 4.80m²
U: 9.20m Fliesen

001 Terrasse
A: 11.23m²
Holzbohlen

001 Dachgarten
A: 8.76m²
Extensiv begrünt

002 Terrasse
A: 27.21m²
Holzbohlen

002 Dachgarten
A: 21.54m²
Extensiv begrünt

3. /140

Platzierung
erwiegend offen

Platzierung
3 Abs.5

6%

Gel.H=1.00m

F03

F04

F01

F02

F03

F04

F01

F02

F03

F04

F01

F02

F03

F04

F01

F02

F03

F04

F01

F02

F03

F04

F01

F02

F03

F04

F01

F02

F03

F04

F01

F02

F03

F04

F01

F02

F03

F04

F01

F02

F03

F04

F01

F02

F03

F04

F01

F02

F03

F04

F01

F02

F03

F04

F01

F02

F03

F04

F01

F02

F03

F04

F01

F02

F03

F04

F01

F02

F03

F04

F01

F02

F03

F04

F01

F02

F03

F04

F01

F02

F03

F04

F01

F02

F03

F04

F01

F02

F03

F04

F01

F02

F03

F04

F01

F02

F03

F04

F01

F02

F03

F04

F01

F02

F03

F04

F01

F02

F03

F04

F01

F02

F03

F04

F01

F02

F03

F04

F01

F02

F03

F04

F01

F02

F03

F04

F01

F02

F03

F04

F01

F02

F03

F04

F01

F02

F03

F04

F01

F02

F03

F04

F01

F02

F03

F04

F01

F02

F03

F04

F01

F02

F03

F04

F01

F02

F03

F04

F01

F02

F03

F04

F01

F02

F03

F04

F01

F02

F03

F04

F01

F02

F03

F04

F01

F02

F03

F04

F01

F02

F03

F04

F01

F02

F03

F04

F01

F02

F03

F04

F01

F02

F03

F04

F01

F02

F03

F04

F01

F02

F03

F04

F01

F02

F03

F04

F01

F02

F03

F04

F01

F02

F03

F04

F01

F02

F03

F04

F01

F02

F03

F04

F01

F02

F03

F04

F01

F02

F03

F04

F01

F02

F03

F04

F01

F02

F03

F04

F01

F02

F03

F04

F01

F02

F03

F04

F01

F02

F03

F04

F01

F02

F03

F04

F01

F02

F03

F04

F01

F02

F03

F04

F01

F02

F03

F04

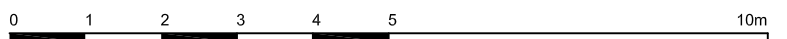
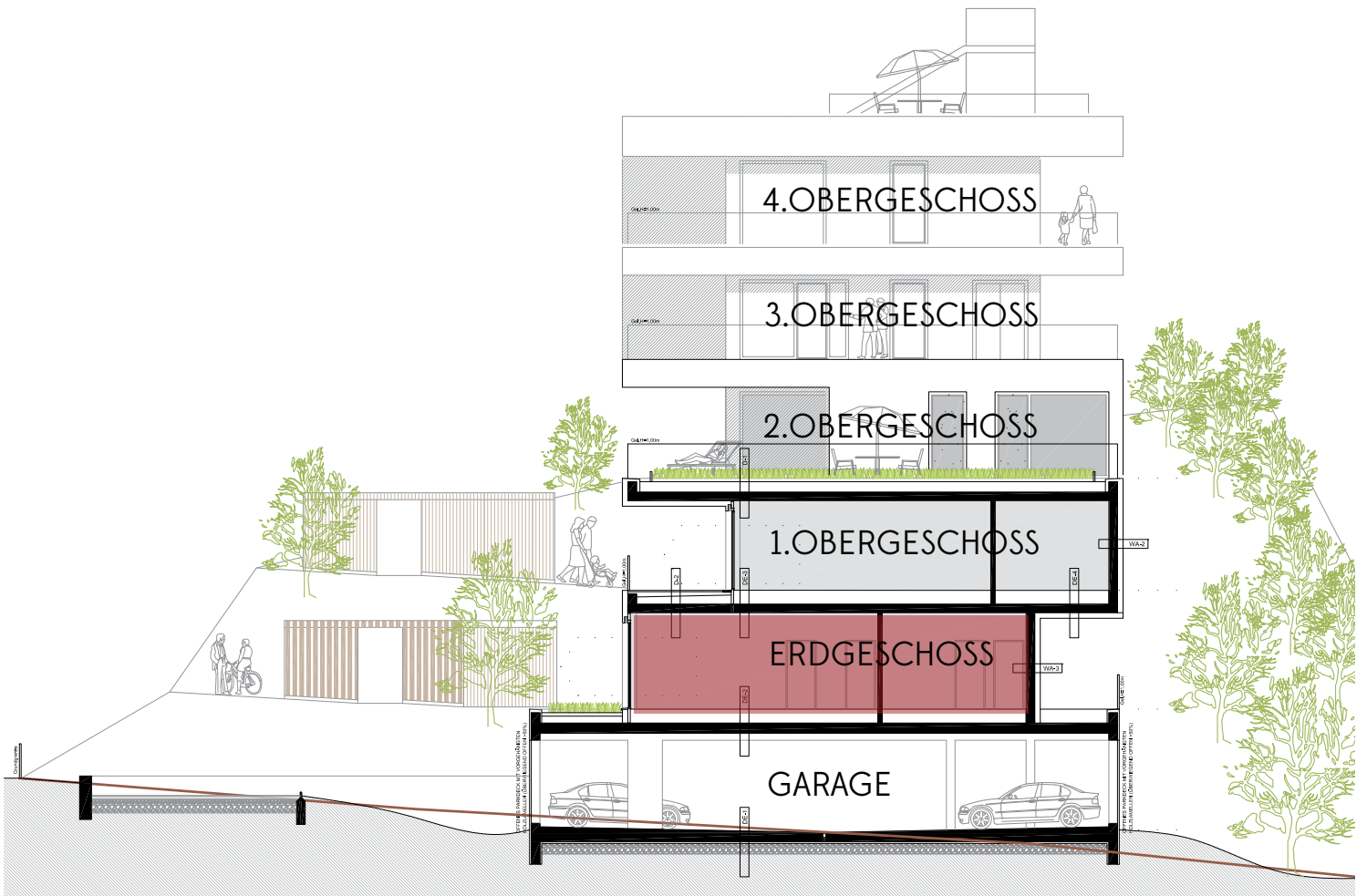
F01

F02

WOHNUNG 02 **SBG 20**
 WOHNNUTZFLÄCHE72,25m²

TERRASSE.....27,25m²
 DACHGARTEN.....21,54m²

KELLERABTEIL.....ja
 PARKPLATZ.....ja





BERATUNG UND
HONORARFREIER VERKAUF
 BERIT SENGER MA, MBA
 bs@wohnraumwerk.at
 0664/9207379